



ORANGE1
HOLDING

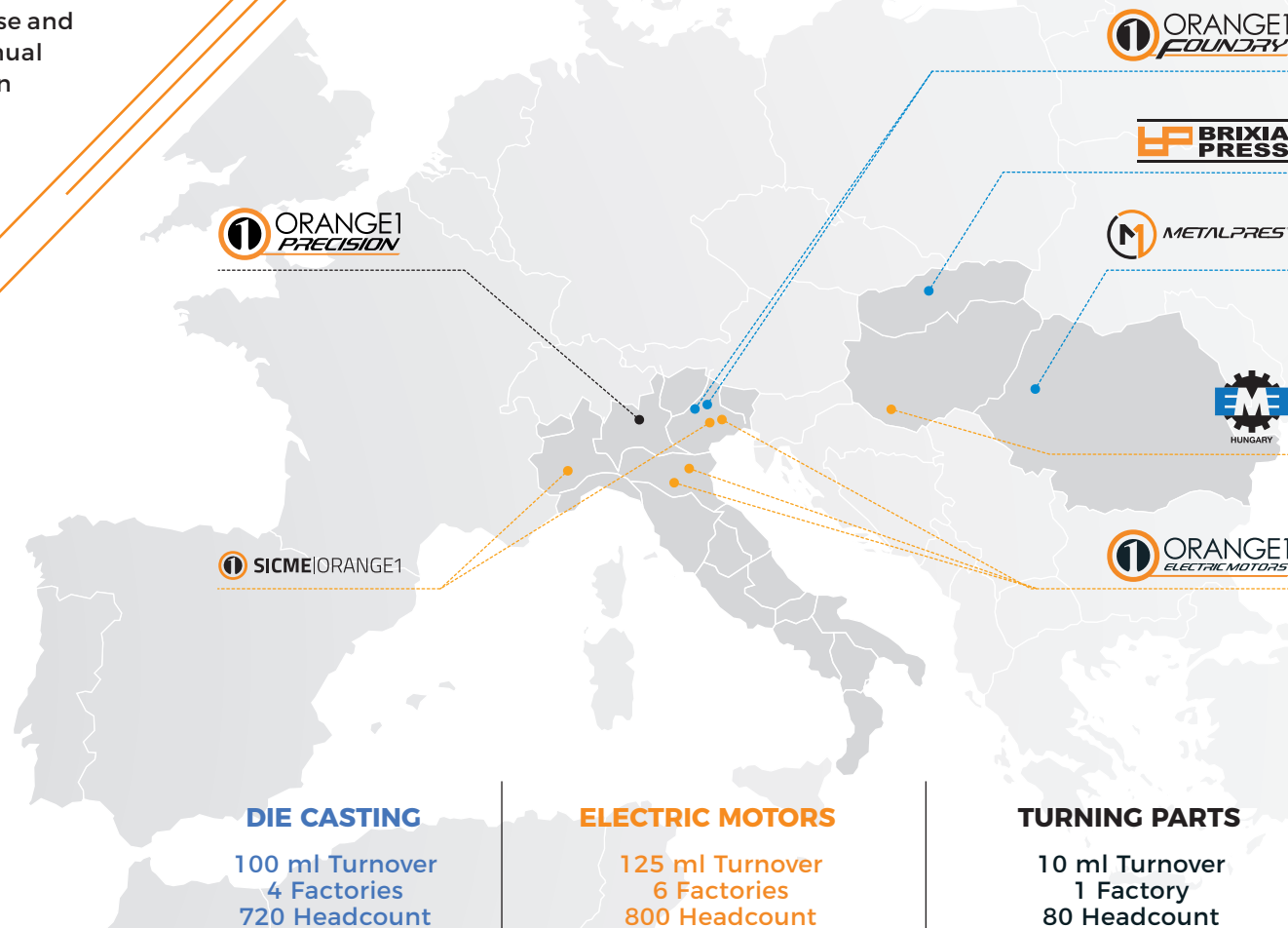
Wood, Glass & Stone Processing

Orange1 Electric Motors



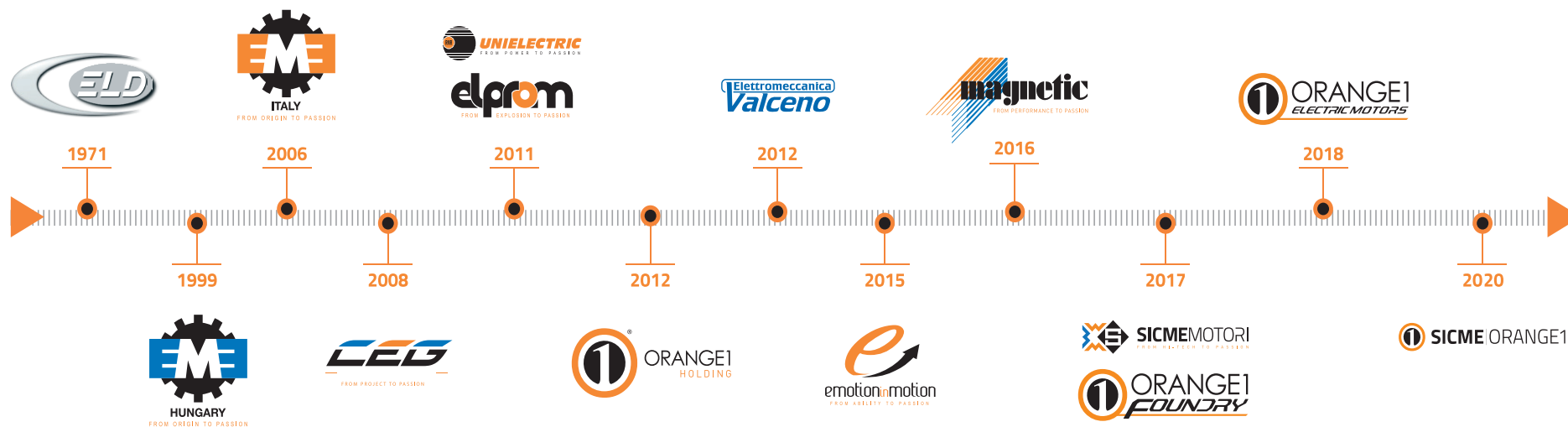
A dynamic, strong and ambitious Group

Orange1 Holding is an international renown Group, one of the most important European manufacturers of single-phase and three-phase asynchronous electric motors. It has an annual capacity of more than 1 million motors and 5 million electric stators with an annual turnover of approx 235 million euro and more than 1600 workers in 15 production facilities. The group, established in 1971 by Leone Donazzan, chaired today by his son Armando Donazzan, is strongly focused on technological innovation, performance and customization to meet individual clients requirements.





The aim of O1EM is to manufacture custom made motors to meet clients and market expectations. The actual production covers a large range of AC and DC motors, as well as brushless motors and Variable Frequency Drives, to provide total solution. This know how in supplying products to the Textile markets makes O1EM reliable and skilled for the ideal motor settings to secure long terms performances in heavy environment conditions.



Main applications in the wood, glass & stone processing

covered by Orange1 electric motors

Beam Saws Motors

Beam saws are one of the most effective methods of precise panel cutting, especially for wood or stones. With semi-automatic adjustments, the saw can be used to work with a range of different tasks all in one day, although some of them require manual manipulation. Orange1 is specialized in the production of electric motors for beam saws, according to the customer requirements in terms of speed, frame and performances.



Edge Banders Motors

With the help of a specific electric motor the edge bander machine for wood, glass or stone bonds the edge banding to the substrate, trims the leading and trailing edges, trims top and bottom flush with the substrate, scraps any surplus, and buffs the finished edge. Orange1 can provide the best motors solution in accordance to the customer project for his machines ensuring the best precision, performance and duration over time.

Main applications in the wood, glass & stone processing

covered by Orange1 electric motors

Profiling Machine Motors

Profile machines are machines which work with large volumes of material. They require high amounts of energy, space and maintenance. The speed at which the wood or glass sheet passes along the band is a large factor in determining the machine's efficiency. Orange1 can provide the best solutions in the best solutions in terms of efficiency even in small motors, to guarantee the best performance even in the most compact machines.



Drilling Solutions Motors

Drilling machines use a drilling tool that has cutting edges at its point. This cutting tool is held in the drill press by a chuck or Morse taper and is rotated and fed into the work at variable speeds. The electric motor is a fundamental part for a drilling machine: Orange1 is able to guarantee the best performance and durability in all its motors dedicated to this application and specially built for the customer needs.

Main applications in the wood, glass & stone processing

covered by Orange1 electric motors

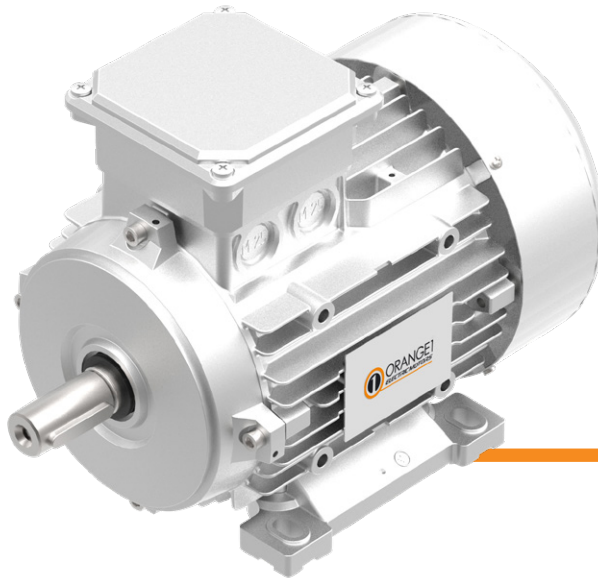
Vertical and Horizontal Machining Center Motors

Machining centers are multi-functional machines that allows with great flexibility to carry out an elevated number of mechanical operations thanks to the ability to have a large number tools in the changer., such as milling, boring, threading, drilling, etc... Orange1 is the perfect partner thanks to his Know-how in the wood and glass processing sector. Our R&D department can provide the best solutions for the customers, in accordance to their projects and requirements for vertical and horizontal machines. Thanks to our experience and internal testing laboratories we can guarantee the best performance combined with excellent reliability and after-sales assistance.



Electric Motors Production

for Wood, Glass & Stone Processing Applications



Single-Phase and Three-Phase Asynchronous Motors

One speed or two speeds three phase motors manufactured in accordance with different specifications requested by the clients. Available in 2-4-6-8 pole from 0,09 kW up to 30 kW, in aluminum housing IEC 56 up to IEC 180. UL/CSA approval available on demand.

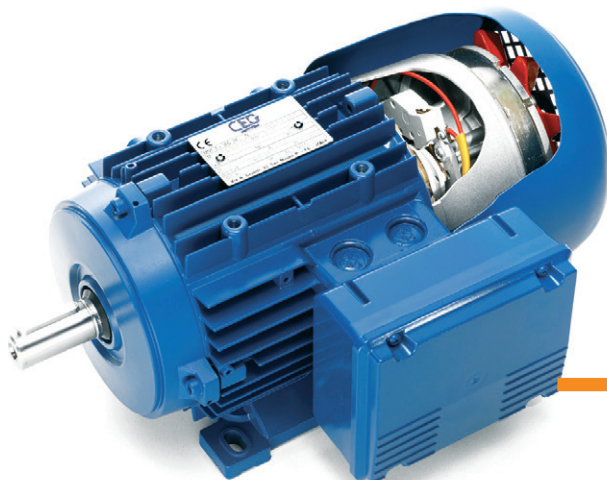
NGBe Permanent Magnet Brushless Servomotors

The NGBe brushless servomotors are designed to meet the increasingly demanding needs of the automation industry, which require high-performance systems, greater reliability, and reduced maintenance. We used high-quality materials to develop the NGBe series. The new aesthetic and functional details introduced allowed us to reduce the overall dimensions, resulting in great savings for the customer.



Electric Motors Production

for Wood & Glass & Stone Processing Applications

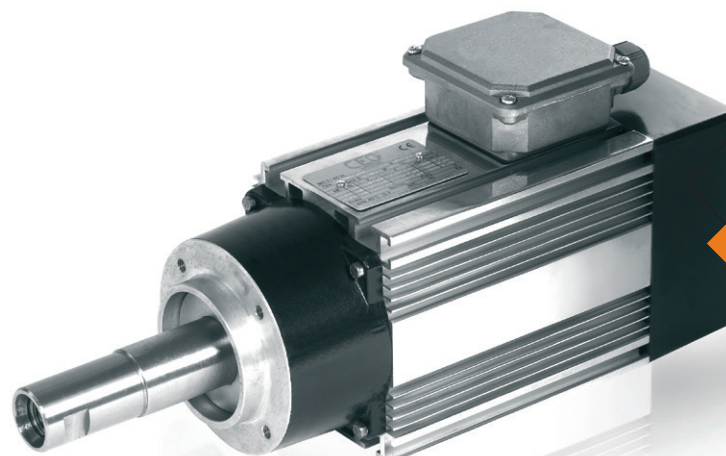


Gradual Brake Motors

Motors equipped with brake offering a gradual and silent brake stop of the moving parts in accordance with the regulation of safety in workplace. The motors are made in single and three phase, single or double speed, 2-4-6-8 poles from 0,13 kW up to 18,5 kW. On demand it is available IE3 efficiency, IE3 approved.

Low Center Motors

This range of motors will be used in application where high power is combined to low centre. Available with blade discs or flange. Special arrangements with collet chuck shaft end on demand. Motors are made for inverter duty in 2 and 4 pole single and three phase. Available with Gradual brake and/or UL approval from 0,25 kW up to 15 kW.



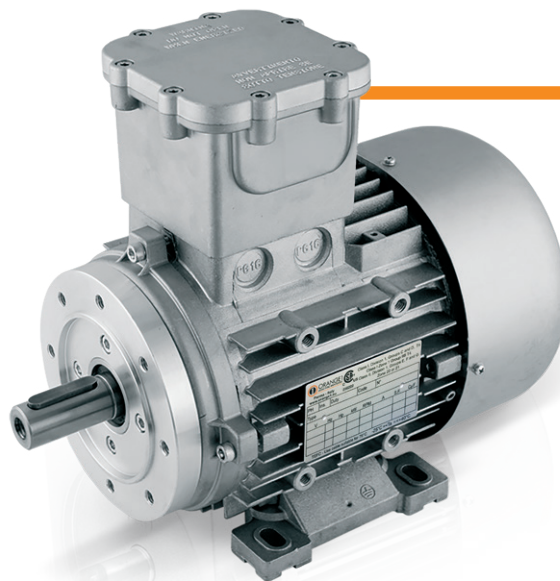
Electric Motors Production

for Wood & Glass & Stone Processing Applications



Encapsulated Water Proof Motors

We have developed a process using a special resin material that makes the electric internal parts of the motors completely waterproof. The motors are resistant to the most hostile environments in terms of presence of water and humidity. All the motors of our range could be manufactured with this technology with no restrictions.



Atex Motors range

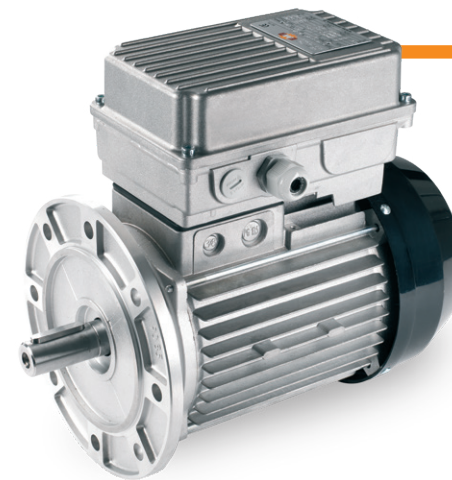
O1EM has a wide range of Atex Motors covering most of the customers request:

Ex db, EX db eb, Ex eb, Ex ec

From 56 to 180 frame size

Zone 1, 2, 21 and 22 - 2GD, 3GD

Certifications ATEX, IECEx, EAC, KCs, cCSAus



Inverter for Electric Motors

The Inverter is an electronic device designed to convert direct current DC power input into alternating current output. This device is mainly used to control and change the frequency of the asynchronous electric motors in industrial application. Without the VFD these motors will run with constant speed as they get a constant frequency

WHY CHOOSING ORANGE1 PREMIUM SOLUTIONS

IN WOOD, GLASS AND STONE PROCESSING

Since the 1970s, the Orange1 group companies have grown exponentially thanks to the relationship and technical collaboration with leading companies in the wood sector, which over time have also associated with their production the machinery for processing marble and glass.

Born with these specific solutions, Orange1 has evolved by offering **innovative and competitive solutions** to our old and new customers in the sector, **to efficiently solve problems related to safety at work** (such as the on-board braking system in the motors), **to reduce the overall dimensions of the motors**, the **accurate balancing of the shaft**, the uncompromising choice of **high quality components** able to withstand **heavy radial loads**, up to the most recent adaptations to the highest energy efficiency classes and **world safety standards**.



MADE IN ITALY GUARANTEED



HIGH LEVEL OF CUSTOMIZATION



RELIABILITY & DURABILITY



QUALITY



100% TESTED





After sales, replacement & service

Orange1 Quality and Technical Team, together with a dedicated internal department, offers a full service system able to satisfy any specific request into electric motor maintenance. Orange1 Service can provide an innovative diagnostic tools for electrical testing and analysis to pinpoint immediately specific motor issues, and can provide a service of reparation for motors.



info@orange1.eu
www.orange1.eu

follow us   

