



R&D

department and
laboratory
areas



PASSION FOR CUSTOMIZED SOLUTIONS



 **ORANGE1**
ELECTRIC MOTORS



 **SICME | ORANGE1**




HUNGARY



Elettromeccanica Leone Donazzan was established on 1971 in Bassano del Grappa. In 1983 the company turned into Eld Spa. In 1998 Armando Donazzan took over the running of the company; thanks to his determination and intuition he applied new financial and commercial policies which increased the level of reliability and visibility. In March 2006 the company changed its name to EME Spa and finally become Orange1 Electric Motors in 2018. The aim of O1EM is to manufacture custom made motors to meet clients and market expectations. The actual production covers a large range of AC and DC motors, as well as brushless motors and Variable Frequency Drives , to provide total solution.

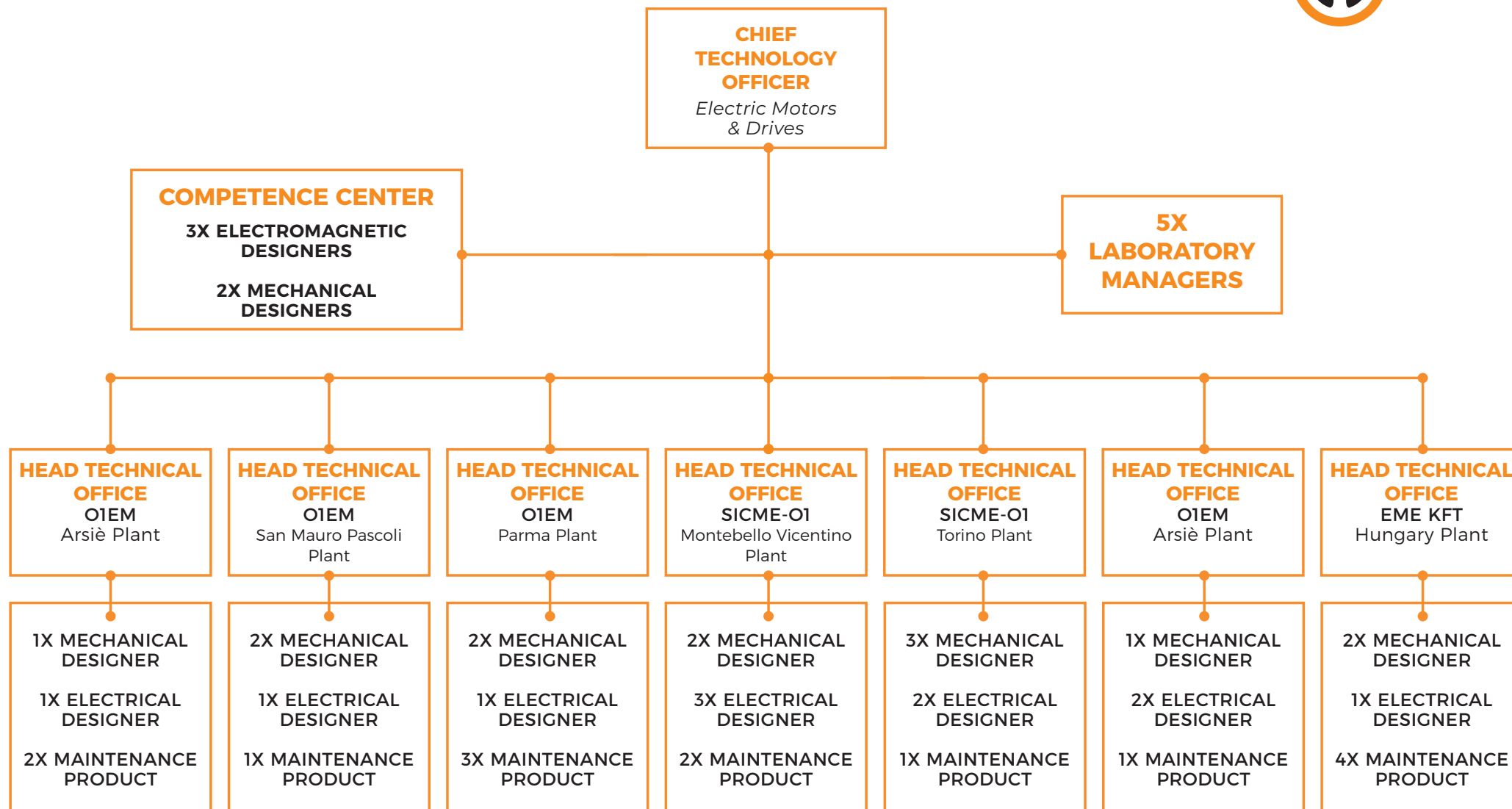


Sicme Orange1 has born from the merge of Sicme Motori and Magnetic. Sicme Motori, founded in 1967, produces high quality DC motors and it represents a benchmark of excellence for its technology providing the best economical solutions for many different applications. Since 2002 it has been cooperating actively with the Institute of Electrical Engineering of the Polytechnic of Turin and it has been one of the world's largest producers of wind generators. In 2008, it has developed motors with ASR technology, the most revolutionary type of electric machine in the world, and in 2014 developed an innovative range of synchronous reluctance motors IE4 with a specific patent. A company with a 40 years history, well-known around the world for the high quality and product technology, it produces Asynchronous motors up to 3700 Kw, Synchronous motors up to 2700 Kw, Hydroelectric Generators up to 3000 Kw, Mini-Wind generators up to 200 Kw and Wind Turbines up to 5000 Kw. Magnetic Motors, founded in 1973, manufactures electrical machines specifically designed to be used for variable speed application. The company is located in Montebello Vicentino, Vicenza - Italy.



EME Kft was founded in 1999 as a manufacturer of Electric Windings. The company's assembly lines consist of semi-automatic and manual assembly stations. Thanks to the experience in the development and production of Electric Stators Windings and Electric Motors the company is able to find solutions for complex electrical machines. EME Kft produces windings for multiple applications: pressure washers, compressors, pumps for surface and submersible pumps, gate openers, motors and lifts. EME Kft manufactures all the components using automated production lines and advanced technology equipment in order to maintain a high level of production. EME Kft address international markets that appreciate the value of its strategic position at the heart of Europe. The company develops and manufactures a range of custom made products which are suitable for its customers' demand, ensuring reliability.

ORGANIZATION CHART



TECHNICAL DEPARTMENTS

 SICME|ORANGE1



 **ORANGE1**
ELECTRIC MOTORS



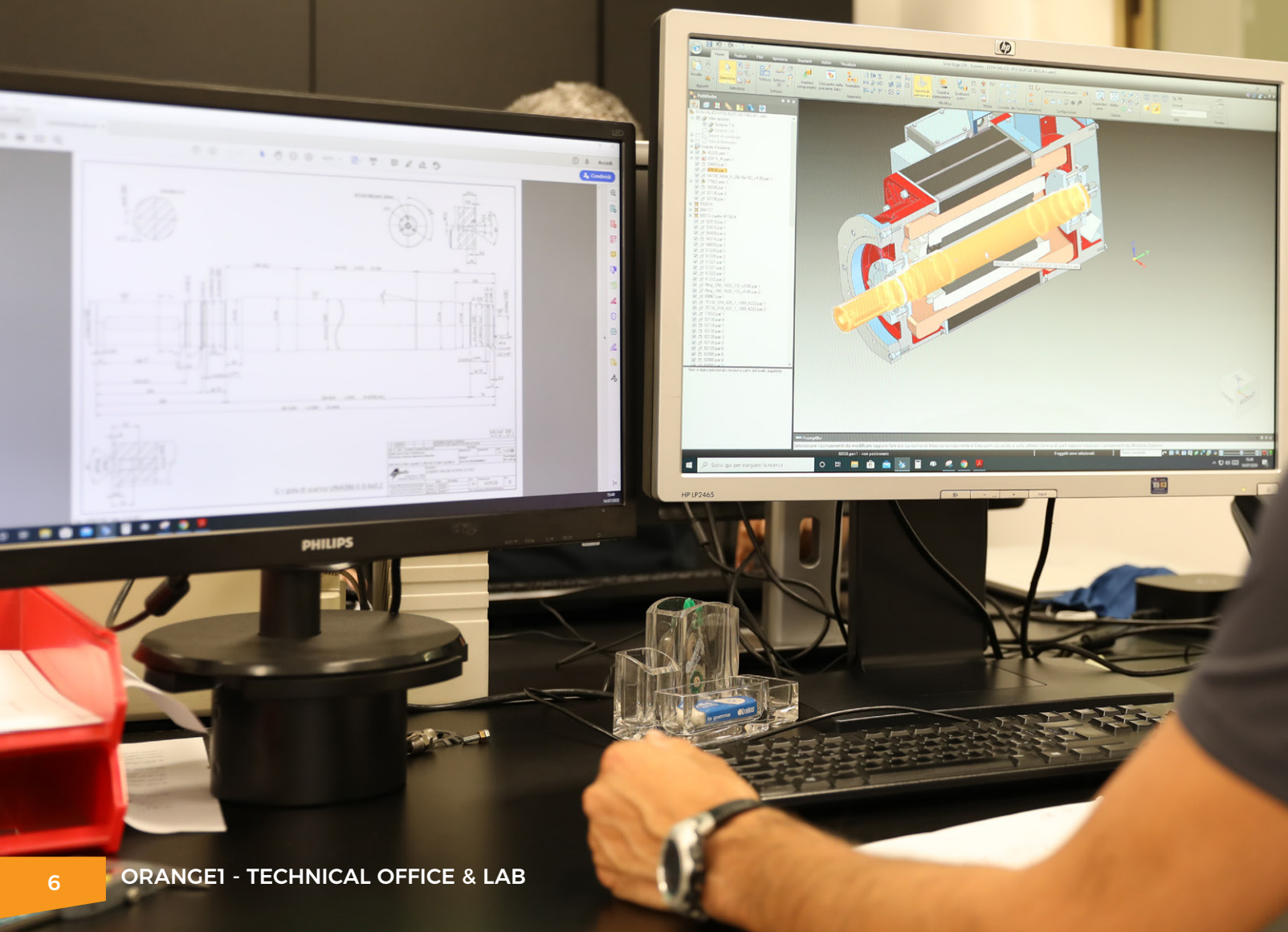
A TEAM OF 26 SPECIALIZED DESIGNER

High technical skill and competence centers for mechanical and electromagnetic design

ELECTRIC MOTORS DIVISION		MECHANICAL DESIGNER	ELECTRICAL DESIGNER	ELECTRONIC DESIGNER
Orange1 Electric Motors S.p.A.	"Via Angelo Messedaglia 4 32030 Arsìè (BL)"	3	2	2
	"Via Grandi 23 47030 San Mauro Pascoli (FC)"	2	1	
	"Via Mantova 93 43122 Parma (PR)"	2	1	
Sicme Orange1 S.r.l.	"Via del Lavoro 7 36054 Montebello Vicentino (VI)" COMPETENCE CENTER	1	3	
	"Strada del Francese 130 10156 Torino (TO)"	3	2	
EME KFT	"Csengery ut 125 Nagykanizsa - 8800 - Hungary"	3	1	

COMPETENCE CENTER

VICENZA PLANT



COMPETENCE CENTER

FROM PASSION TO PROJECT

Our R&D team co-operates closely with the University in order to develop a series of innovating projects. Our projects are fully developed with an high experienced engineers team through the most advanced and up-to date software to the finite element methode. Thanks to this technology and workflow, we can reach the highest performance and highest efficiency of our electric motors, starting from standard products for large-scale production up to special products tailored to customer needs.



SCAN THE QR CODE
AND WATCH THE VIDEO ABOUT
THE ORANGE1 TECHNICAL DEPT.



SICME | ORANGE1

TESTING LAB FOR:

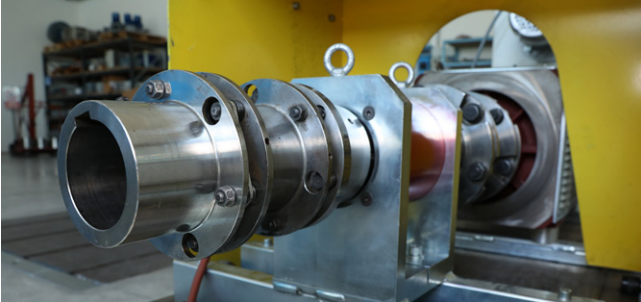
- **AC vectorial motors**
- **Brushless motors**
- **Asynchronous motors**
- **Motor-inverter**
- **PM Motor**
- **Range power motor up to 1,7MW at 600V.**

All the data coming from our test benches are used to develop our technologies, using the best **F.E.M. Softwares** for the analysis and development of our products.

With this softwares we are able to simulate every application of the motor, providing the best performances and efficiency.



TECHNICAL LABORATORY



Precision mechanical parts of the test bench



Brushless motors bench test



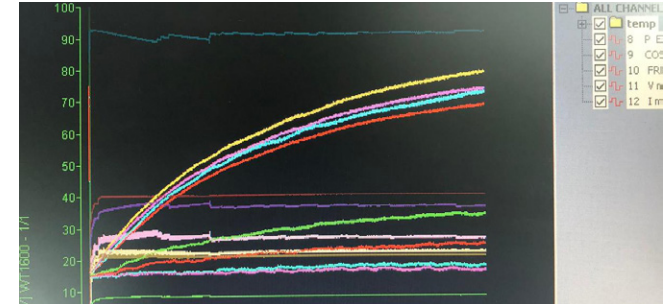
Precision power analyzing system



Bench test for DC motors up to 800kW



Console of the test cabin for motor up to 1,5MW



Heating temperature diagram



Datalogger



Test of the insulation system device



Desk test for electric motors analysis



info@orange1.eu
www.orange1.eu

follow us   

ORANGE1 Electric Motors Spa

Administrative Headquarter

Piazza della Repubblica 28
20124 - Milano Italy

Production plants

Via Angelo Messedaglia 4
32030 - Arsiè (BL) Italy
T. +39 0439 750067
F. +39 0439 750070

Via A. Grandi 23
47030 - San Mauro Pascoli (FC) Italy
T. +39 0541 815611
F. +39 0541 815684

Via Mantova nr. 93
43122 Parma (PR) Italy
T. +39 0521 272383
F. +39 0521 272686

SICME ORANGE1 Srl

Administrative Headquarter

Piazza della Repubblica 28
20124 - Milano Italy

Production plants

Via del Lavoro 7
36054 - Montebello Vic.no (VI) Italy
T. +39 0444 649399
F. +39 0444 440495

Strada del Francese n. 130
10156 - Torino (TO)
T. +39-011-4076311
F. +39-011-4500047

